



# Cleansing ritual

Whatever the dimensions of the room, a bathroom can be transformed into a retreat, when you seek the right advice

The master bathroom is quite possibly the most personalized space in the home. Regardless of the size and shape of the room, it is important to achieve an intimate ambiance that reflects the owners' desires.

Design Services that are inclusive of custom-designed pieces and professional consultation are available from Cheng Design, says principal

Fu-Tung Cheng.

For the bathroom featured here, he enhanced the room's generous proportions by using simple, raw materials and a functional layout.

"I wanted to create a bathroom that would appropriate the luxuriousness of a large area without resorting to things like embellished cabinetry," says Cheng.

The design is minimalist

and pared-back, to promote the feeling of being in a spa retreat. Key fixtures such as the bathtub transcend their practical use to become sculptural pieces, says Cheng.

"The bathroom is designed to reflect the ritual of taking a bath. The tub sits on a platform of duckboard, which looks as if you could just lie down on it and enjoy a massage."

Beneath the duckboard is

a tiled floor with two separate drains. The changing direction of the wooden slats indicates where the boards can be lifted up to allow easy cleaning.

To make the tub water tight, Cheng clad a stainless steel tub-liner with cement board and finished it with a layer of crackled glazed tiles.

These tiles, wiped with India ink to accentuate the crazing, have also been used to

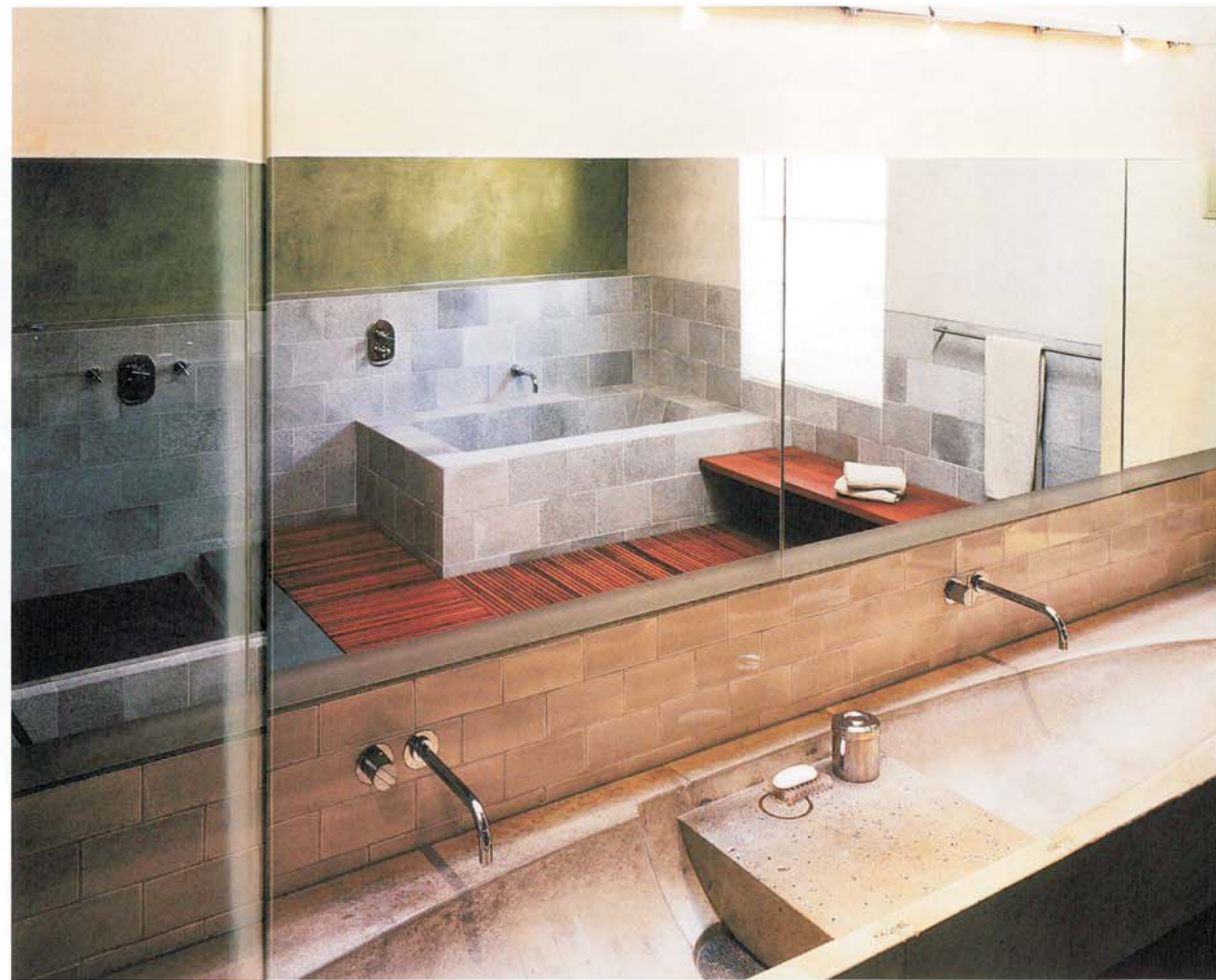
partially line the walls. Teamed with a trowel-finished plaster wall in a bold green shade, the gray tiles, dark poured concrete and the rich golden hue of the wood, create a sensuous atmosphere, says Cheng.

Other surfaces reinforce this theme. A two-coat, raked plaster finish gives the ceiling the look of soft corduroy fabric. The 11-ft long concrete vanity is Geocrete, Cheng Design's

product line of countertops that are available for residential and commercial projects.

"To make the vanity compelling, I cast a single sculptural object as a focus rather than a cluster," says Cheng.

For further information, contact Cheng Design, 2808 San Pablo Avenue, Berkeley, CA 94702, phone (510) 849 3272, fax (510) 849 3274. Website: [www.chengdesign.com](http://www.chengdesign.com).



**Facing page:** Glass shower walls ensure that the clean lines of this bathroom design are uninterrupted.

**Above:** This bathroom has the feel of a luxurious spa. Crackled glazed tiles, hand-rubbed with ink, emphasize the lower half of the walls. A plaster finish the shade of green Wasabi adds a burst of fresh color above the tiles.

**Left:** Fixed to the wall, the vanity has been designed to maintain the bathroom's sense of space.